

BILEVEL | THE ERIKSON

THE ERIKSON

1200 SQ FT



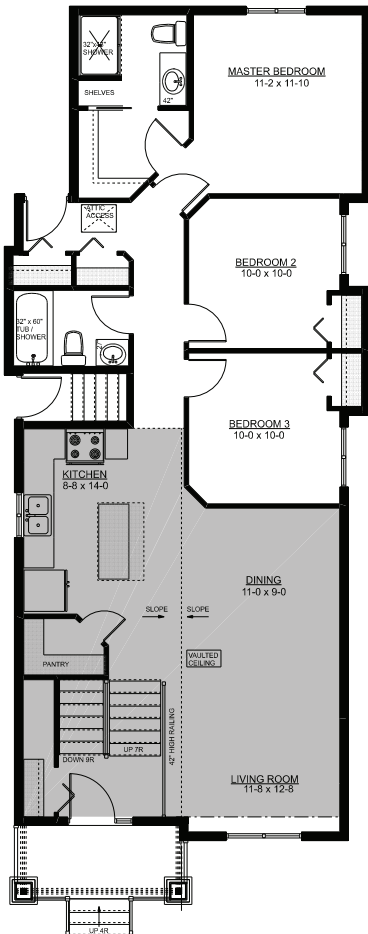
STARTING AT
\$243,900
 PLUS LOT

vinlandhomes.com

Building Smart Investments

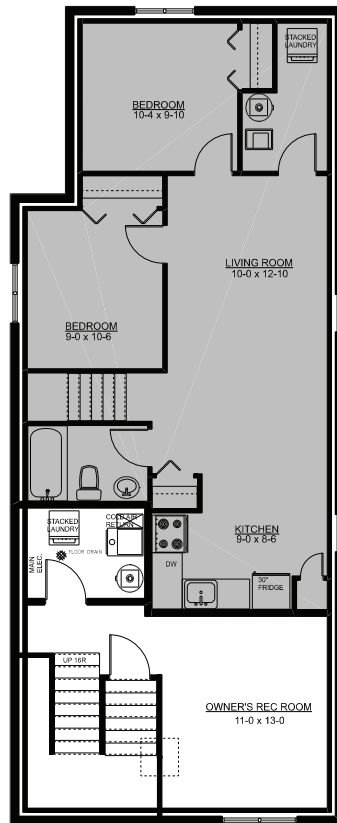


- * Vaulted Open Concept
- * 9' Ceilings on Main Floor
- * Separate Suite Entrance
- * Master Bedroom with Ensuite and Walk-in Closet
- * Triple Pane Windows
- * R60 Attic Insulation
- * Envelope Seal
- * Watchdog Foundation Waterproofing
- * Full Synthetic Roof Underlay
- * HRV
- * 10 Year Warranty



MAIN FLOOR PLAN

AREA = 1200 SQ FT



BASEMENT DEVELOPMENT

SUITE (SHADED AREA) = 656 SQ FT (EXCLUDES ST.)

