

TWO STORY | THE HUDSON

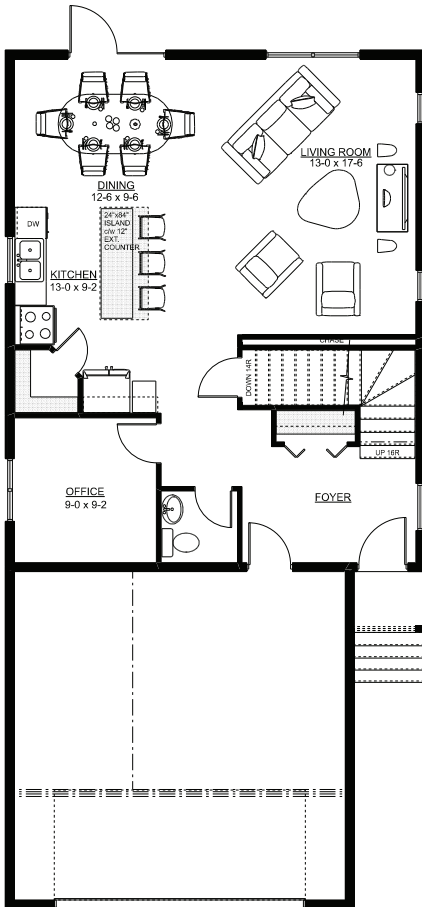
THE HUDSON | 1909 SQ FT



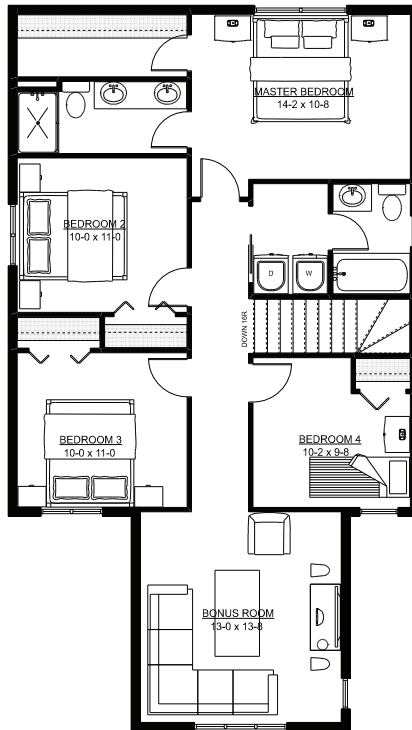
STARTING AT
\$306,900
PLUS LOT

vinlandhomes.com

Building Smart Investments



MAIN FLOOR PLAN
AREA = 875 SQ FT



UPPER FLOOR PLAN
AREA = 1034 SQ FT

- * Open Concept
- * 9' Ceilings on Main & Upper Floor
- * Large Bonus Room
- * Optional 3 Car Attached Garage
- * Optional Separate Suite Entrance
- * 2nd Floor Laundry
- * Master Bedroom with Ensuite and Walk-in Closet
- * Triple Pane Windows
- * R60 Attic Insulation
- * Envelope Seal
- * Watchdog Foundation Waterproofing
- * Full Synthetic Roof Underlay
- * HRV
- * 10 Year Warranty

*Optional
Legal 2 Bedroom
Basement Suite*